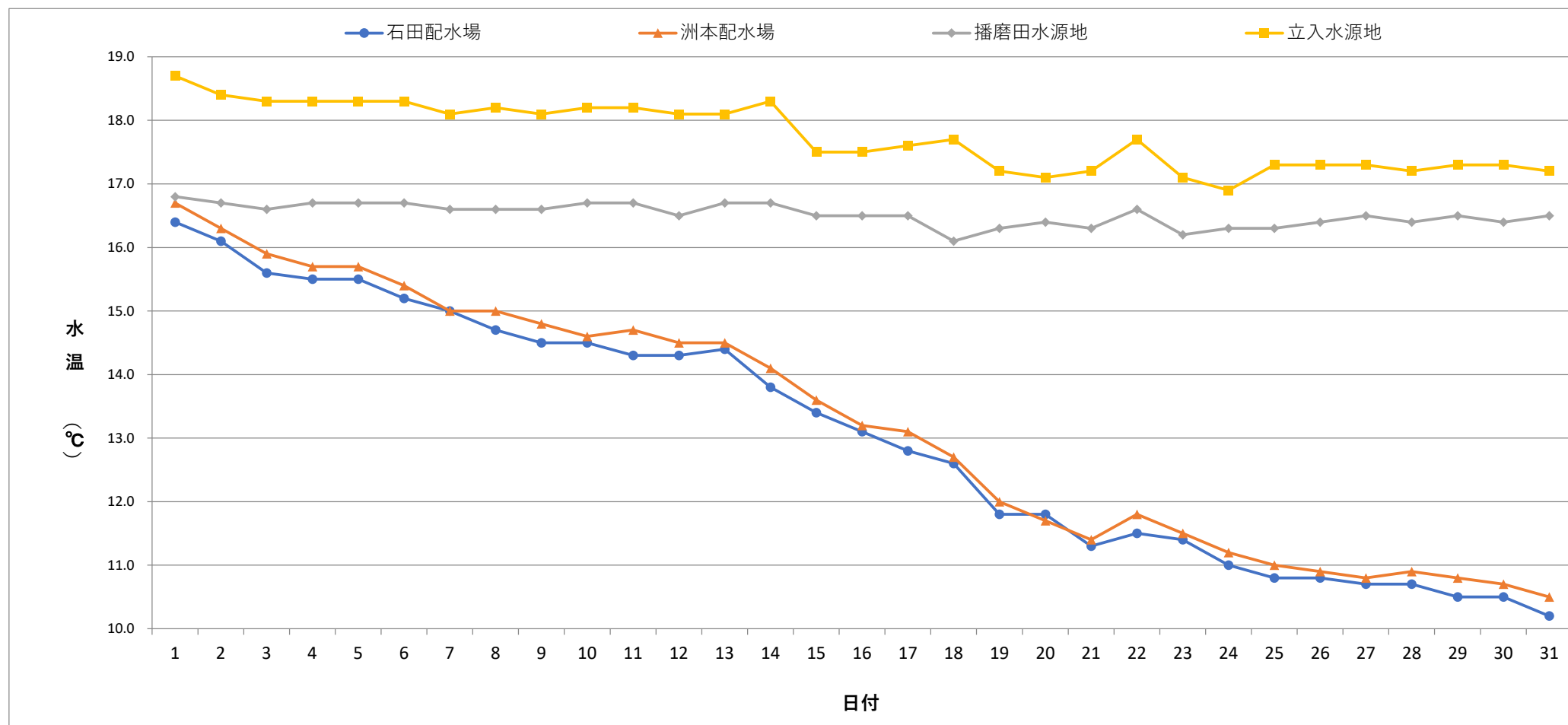


毎日水質検査報告 (給水栓)
 令和4年12月 各施設 水温



	1	2	3	4	5	6	7	8	9	10	11	12	13	14	15	16	17	18	19	20	21	22	23	24	25	26	27	28	29	30	31
石田配水場	16.4	16.1	15.6	15.5	15.5	15.2	15.0	14.7	14.5	14.5	14.3	14.3	14.4	13.8	13.4	13.1	12.8	12.6	11.8	11.8	11.3	11.5	11.4	11.0	10.8	10.8	10.7	10.7	10.5	10.5	10.2
洲本配水場	16.7	16.3	15.9	15.7	15.7	15.4	15.0	15.0	14.8	14.6	14.7	14.5	14.5	14.1	13.6	13.2	13.1	12.7	12.0	11.7	11.4	11.8	11.5	11.2	11.0	10.9	10.8	10.9	10.8	10.7	10.5
播磨田水源地	16.8	16.7	16.6	16.7	16.7	16.7	16.6	16.6	16.6	16.7	16.7	16.5	16.7	16.7	16.5	16.5	16.5	16.1	16.3	16.4	16.3	16.6	16.2	16.3	16.3	16.4	16.5	16.4	16.5	16.4	16.5
立入水源地	18.7	18.4	18.3	18.3	18.3	18.3	18.1	18.2	18.1	18.2	18.2	18.1	18.1	18.3	17.5	17.5	17.6	17.7	17.2	17.1	17.2	17.7	17.1	16.9	17.3	17.3	17.3	17.2	17.3	17.3	17.2

