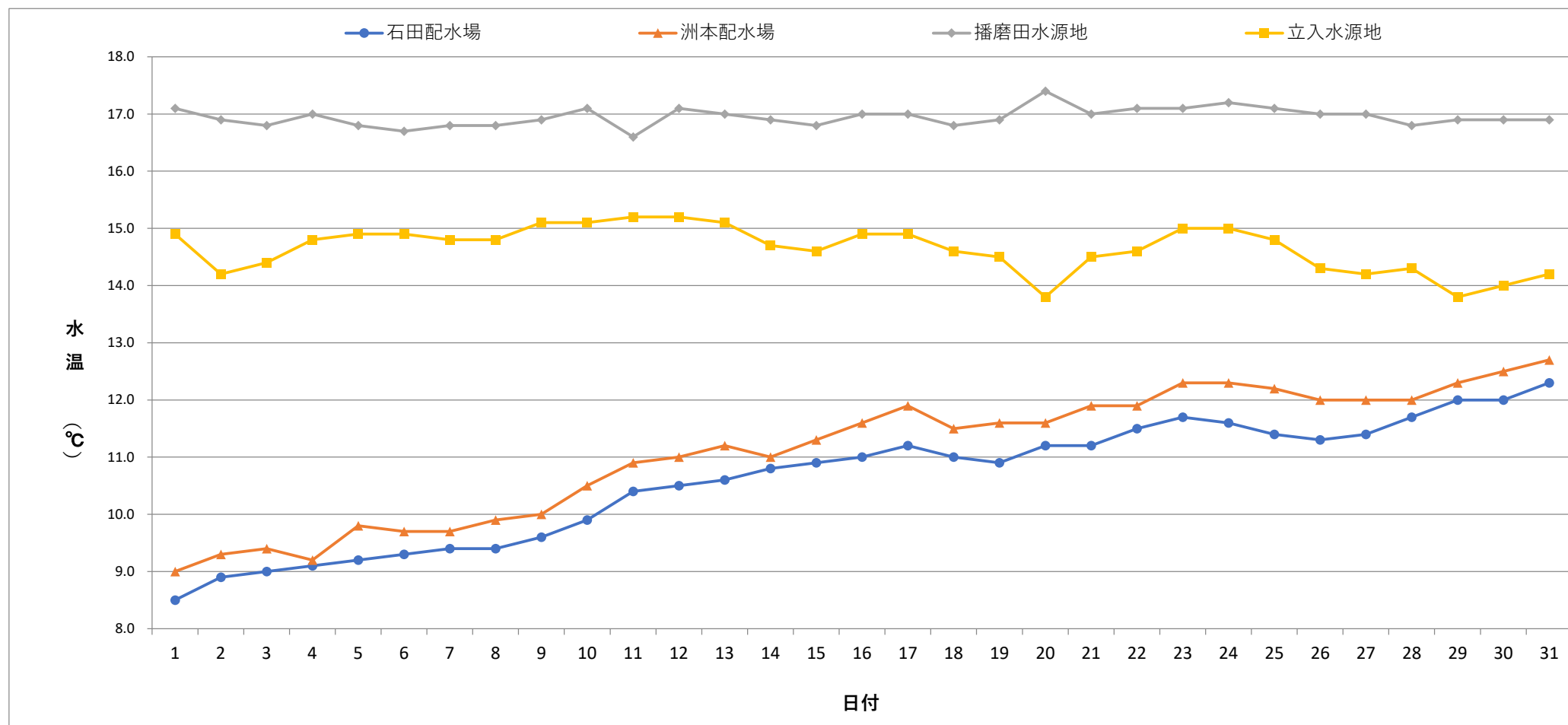


毎日水質検査報告 (給水栓)
 令和5年3月 各施設 水温



	1	2	3	4	5	6	7	8	9	10	11	12	13	14	15	16	17	18	19	20	21	22	23	24	25	26	27	28	29	30	31
石田配水場	8.5	8.9	9.0	9.1	9.2	9.3	9.4	9.4	9.6	9.9	10.4	10.5	10.6	10.8	10.9	11.0	11.2	11.0	10.9	11.2	11.2	11.5	11.7	11.6	11.4	11.3	11.4	11.7	12.0	12.0	12.3
洲本配水場	9.0	9.3	9.4	9.2	9.8	9.7	9.7	9.9	10.0	10.5	10.9	11.0	11.2	11.0	11.3	11.6	11.9	11.5	11.6	11.6	11.9	11.9	12.3	12.3	12.2	12.0	12.0	12.0	12.3	12.5	12.7
播磨田水源地	17.1	16.9	16.8	17.0	16.8	16.7	16.8	16.8	16.9	17.1	16.6	17.1	17.0	16.9	16.8	17.0	17.0	16.8	16.9	17.4	17.0	17.1	17.1	17.2	17.1	17.0	17.0	16.8	16.9	16.9	16.9
立入水源地	14.9	14.2	14.4	14.8	14.9	14.9	14.8	14.8	15.1	15.1	15.2	15.2	15.1	14.7	14.6	14.9	14.9	14.6	14.5	13.8	14.5	14.6	15.0	15.0	14.8	14.3	14.2	14.3	13.8	14.0	14.2

