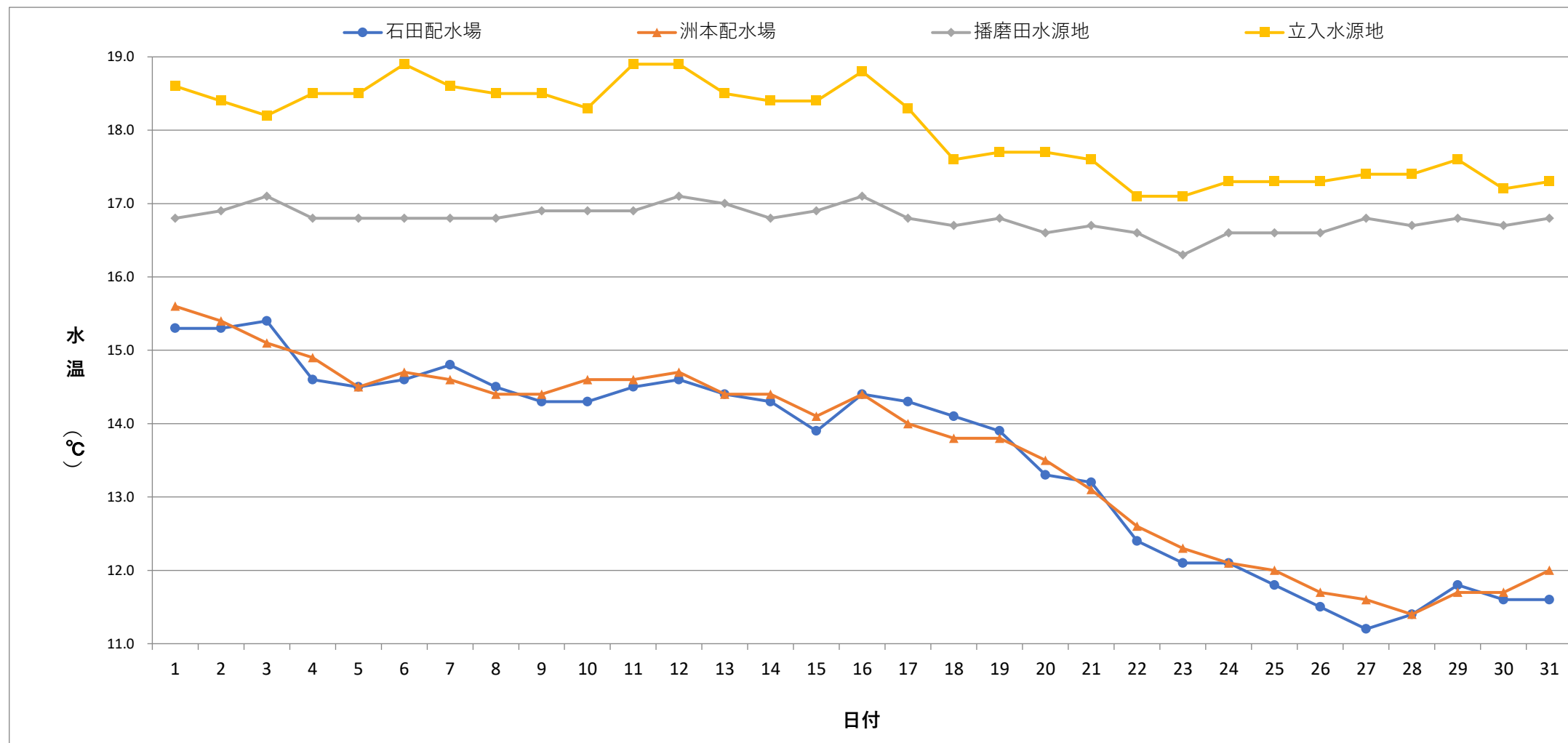


毎日水質検査報告 (給水栓)
 令和5年12月 各施設 水温



	1	2	3	4	5	6	7	8	9	10	11	12	13	14	15	16	17	18	19	20	21	22	23	24	25	26	27	28	29	30	31
石田配水場	15.3	15.3	15.4	14.6	14.5	14.6	14.8	14.5	14.3	14.3	14.5	14.6	14.4	14.3	13.9	14.4	14.3	14.1	13.9	13.3	13.2	12.4	12.1	12.1	11.8	11.5	11.2	11.4	11.8	11.6	11.6
洲本配水場	15.6	15.4	15.1	14.9	14.5	14.7	14.6	14.4	14.4	14.6	14.6	14.7	14.4	14.4	14.1	14.4	14.0	13.8	13.8	13.5	13.1	12.6	12.3	12.1	12.0	11.7	11.6	11.4	11.7	11.7	12.0
播磨田水源地	16.8	16.9	17.1	16.8	16.8	16.8	16.8	16.8	16.9	16.9	16.9	17.1	17.0	16.8	16.9	17.1	16.8	16.7	16.8	16.6	16.7	16.6	16.3	16.6	16.6	16.6	16.8	16.7	16.8	16.7	16.8
立入水源地	18.6	18.4	18.2	18.5	18.5	18.9	18.6	18.5	18.5	18.3	18.9	18.9	18.5	18.4	18.4	18.8	18.3	17.6	17.7	17.7	17.6	17.1	17.1	17.3	17.3	17.3	17.4	17.4	17.6	17.2	17.3

