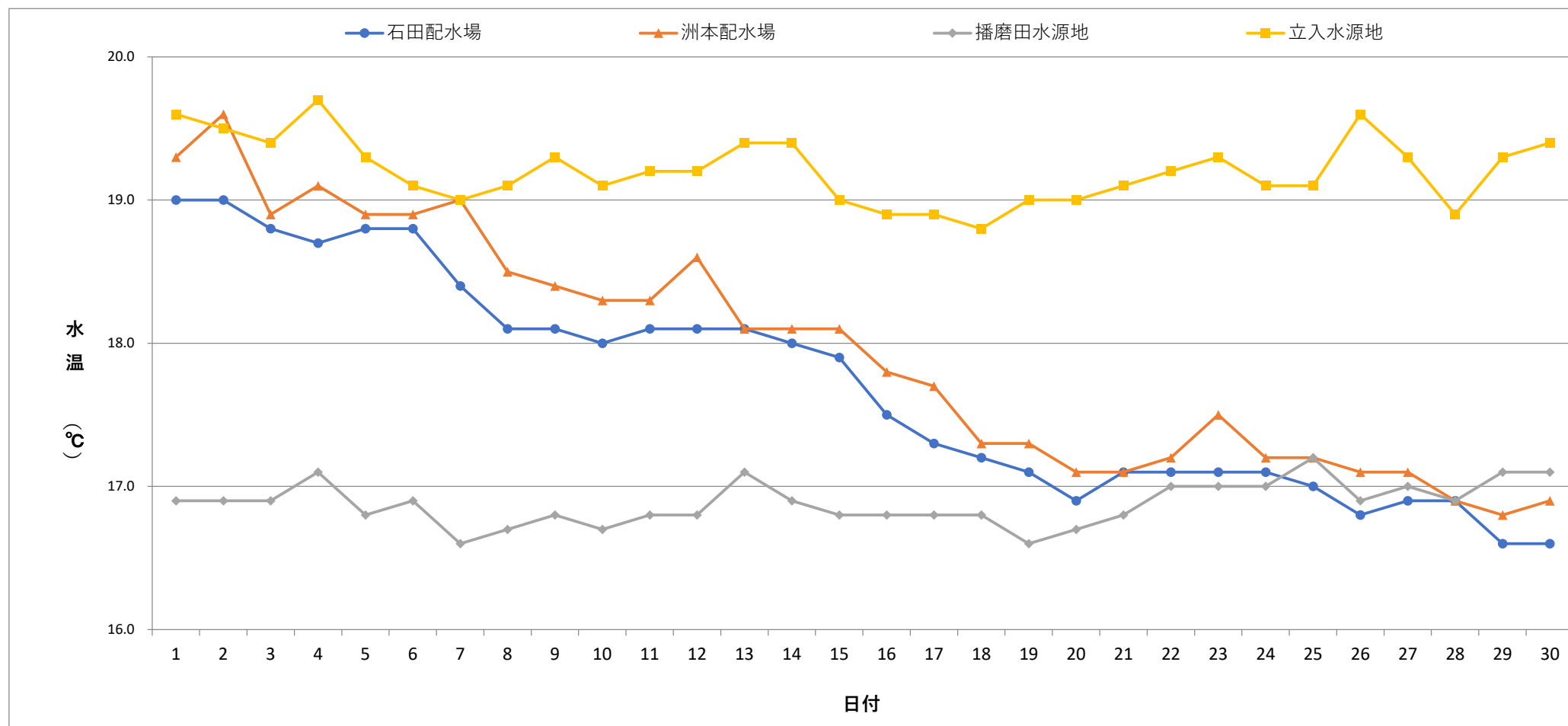


毎日水質検査報告（給水栓）  
 令和4年11月 各施設 水温



	1	2	3	4	5	6	7	8	9	10	11	12	13	14	15	16	17	18	19	20	21	22	23	24	25	26	27	28	29	30
石田配水場	19.0	19.0	18.8	18.7	18.8	18.8	18.4	18.1	18.1	18.0	18.1	18.1	18.1	18.0	17.9	17.5	17.3	17.2	17.1	16.9	17.1	17.1	17.1	17.1	17.0	16.8	16.9	16.9	16.6	16.6
洲本配水場	19.3	19.6	18.9	19.1	18.9	18.9	19.0	18.5	18.4	18.3	18.3	18.6	18.1	18.1	18.1	17.8	17.7	17.3	17.3	17.1	17.1	17.2	17.5	17.2	17.2	17.1	17.1	16.9	16.8	16.9
播磨田水源地	16.9	16.9	16.9	17.1	16.8	16.9	16.6	16.7	16.8	16.7	16.8	16.8	17.1	16.9	16.8	16.8	16.8	16.8	16.6	16.7	16.8	17.0	17.0	17.0	17.2	16.9	17.0	16.9	17.1	17.1
立入水源地	19.6	19.5	19.4	19.7	19.3	19.1	19.0	19.1	19.3	19.1	19.2	19.2	19.4	19.4	19.0	18.9	18.9	18.8	19.0	19.0	19.1	19.2	19.3	19.1	19.1	19.6	19.3	18.9	19.3	19.4







