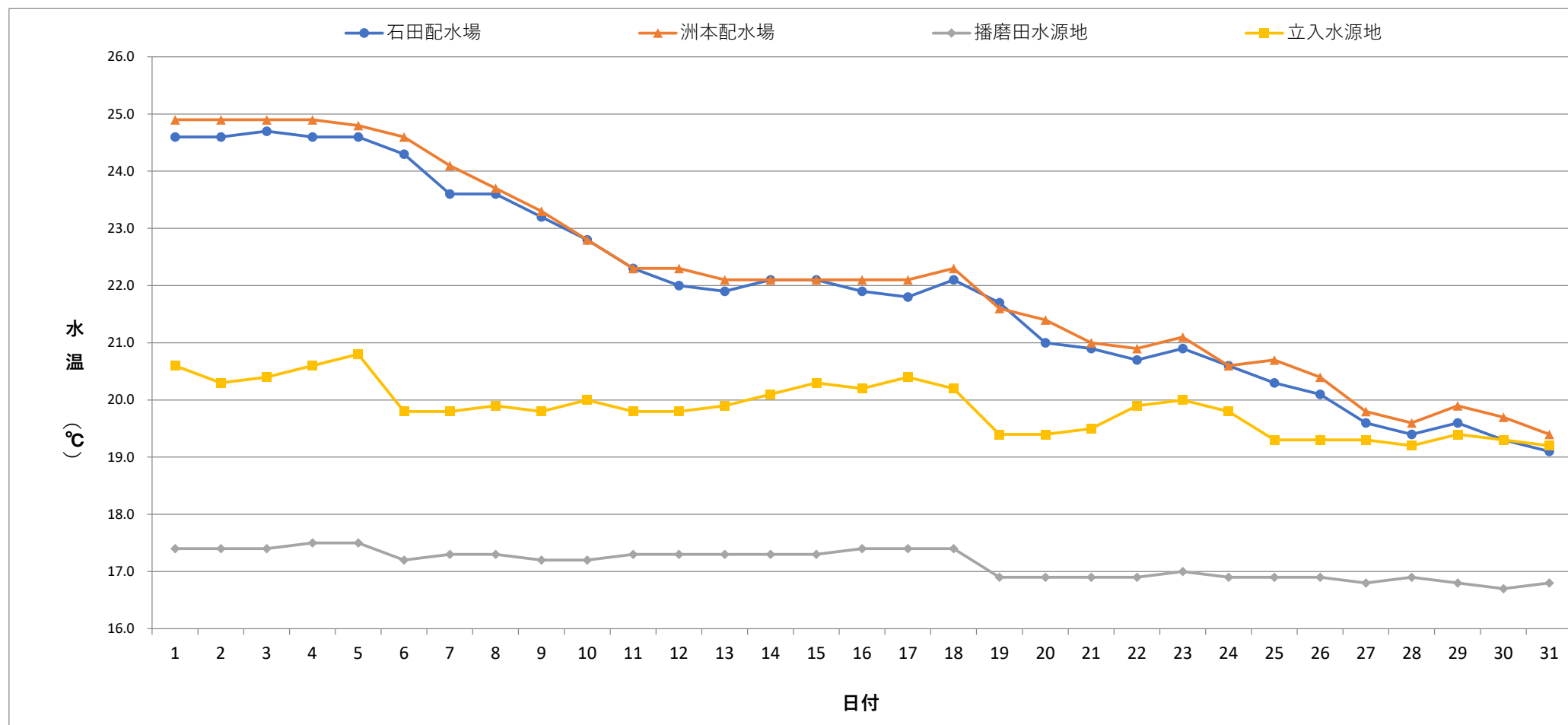


毎日水質検査報告（給水栓）  
 令和4年10月 各施設 水温



	1	2	3	4	5	6	7	8	9	10	11	12	13	14	15	16	17	18	19	20	21	22	23	24	25	26	27	28	29	30	31
石田配水場	24.6	24.6	24.7	24.6	24.6	24.3	23.6	23.6	23.2	22.8	22.3	22.0	21.9	22.1	22.1	21.9	21.8	22.1	21.7	21.0	20.9	20.7	20.9	20.6	20.3	20.1	19.6	19.4	19.6	19.3	19.1
洲本配水場	24.9	24.9	24.9	24.9	24.8	24.6	24.1	23.7	23.3	22.8	22.3	22.3	22.1	22.1	22.1	22.1	22.1	22.3	21.6	21.4	21.0	20.9	21.1	20.6	20.7	20.4	19.8	19.6	19.9	19.7	19.4
播磨田水源地	17.4	17.4	17.4	17.5	17.5	17.2	17.3	17.3	17.2	17.2	17.3	17.3	17.3	17.3	17.3	17.4	17.4	17.4	16.9	16.9	16.9	16.9	17.0	16.9	16.9	16.9	16.8	16.9	16.8	16.7	16.8
立入水源地	20.6	20.3	20.4	20.6	20.8	19.8	19.8	19.9	19.8	20.0	19.8	19.8	19.9	20.1	20.3	20.2	20.4	20.2	19.4	19.4	19.5	19.9	20.0	19.8	19.3	19.3	19.3	19.2	19.4	19.3	19.2







