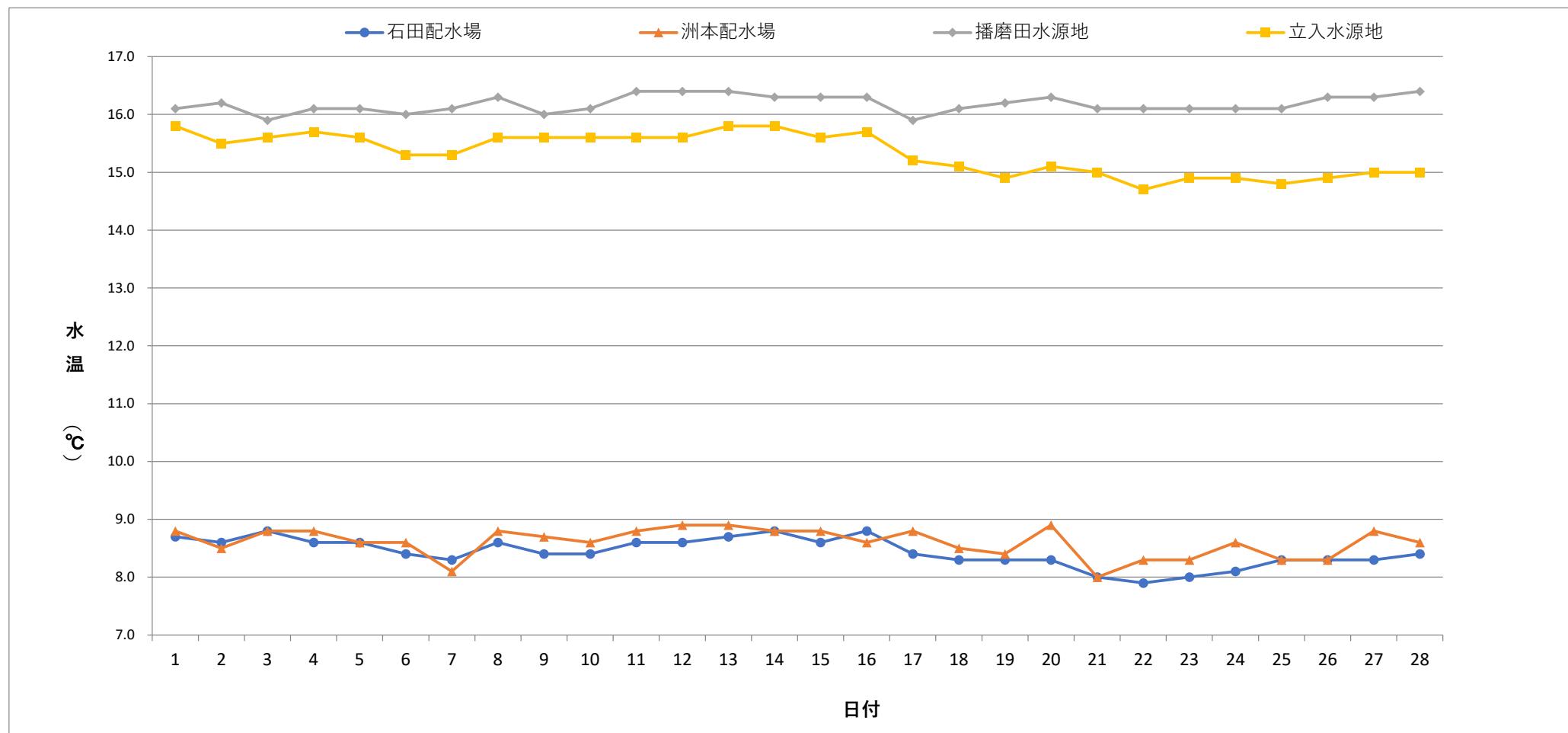


毎日水質検査報告 (給水栓)
 令和4年2月 各施設 水温



	1	2	3	4	5	6	7	8	9	10	11	12	13	14	15	16	17	18	19	20	21	22	23	24	25	26	27	28
石田配水場	8.7	8.6	8.8	8.6	8.6	8.4	8.3	8.6	8.4	8.4	8.6	8.6	8.7	8.8	8.6	8.8	8.4	8.3	8.3	8.3	8.0	7.9	8.0	8.1	8.3	8.3	8.3	8.4
洲本配水場	8.8	8.5	8.8	8.8	8.6	8.6	8.1	8.8	8.7	8.6	8.8	8.9	8.9	8.8	8.8	8.6	8.8	8.5	8.4	8.9	8.0	8.3	8.3	8.6	8.3	8.3	8.8	8.6
播磨田水源地	16.1	16.2	15.9	16.1	16.1	16.0	16.1	16.3	16.0	16.1	16.4	16.4	16.4	16.3	16.3	16.3	15.9	16.1	16.2	16.3	16.1	16.1	16.1	16.1	16.1	16.3	16.3	16.4
立入水源地	15.8	15.5	15.6	15.7	15.6	15.3	15.3	15.6	15.6	15.6	15.6	15.6	15.8	15.8	15.6	15.7	15.2	15.1	14.9	15.1	15.0	14.7	14.9	14.9	14.8	14.9	15.0	15.0

