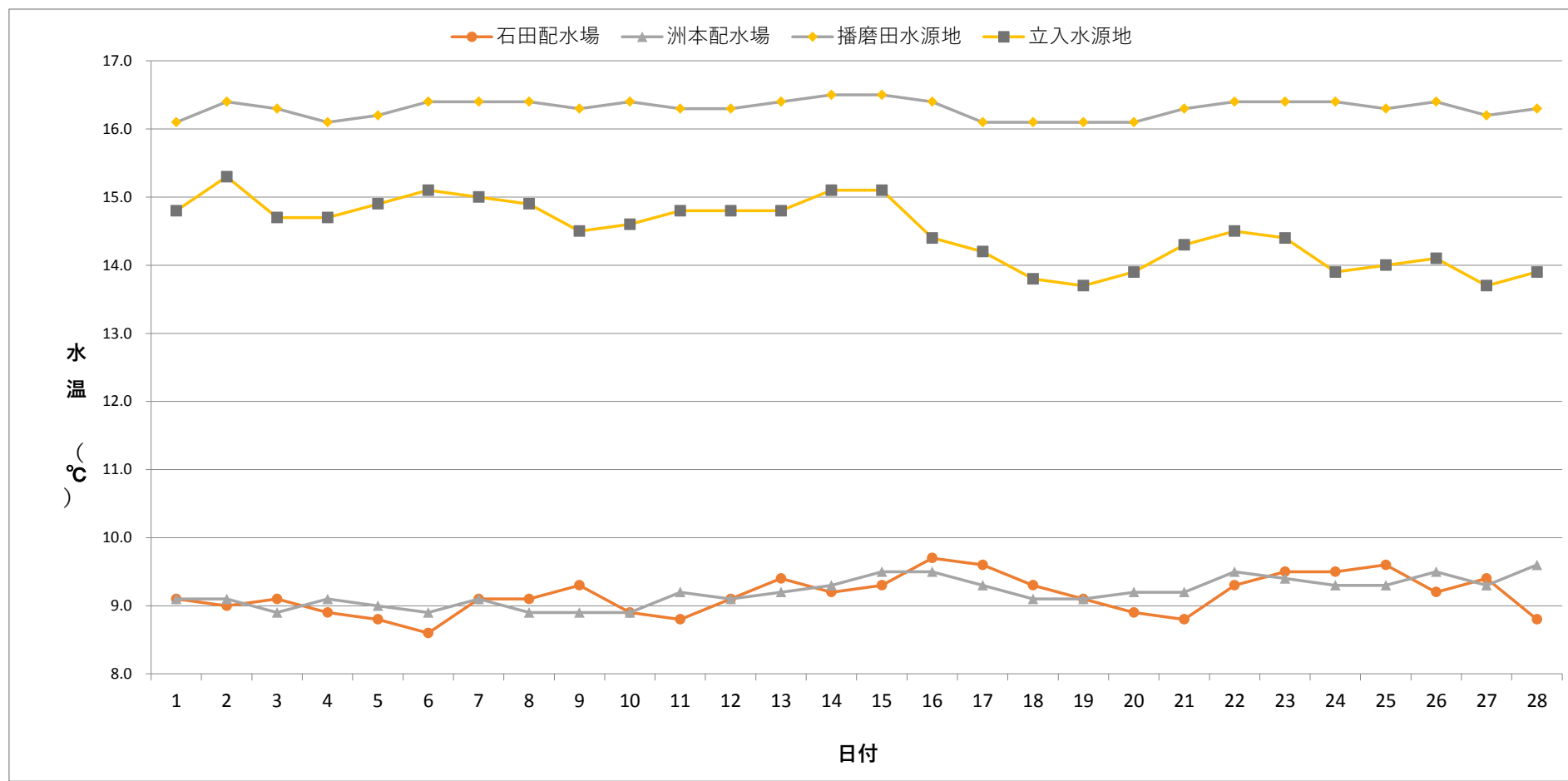


毎日水質検査報告 (給水栓)
 令和3年2月 各施設 水温



	1	2	3	4	5	6	7	8	9	10	11	12	13	14	15	16	17	18	19	20	21	22	23	24	25	26	27	28	
石田配水場	9.1	9.0	9.1	8.9	8.8	8.6	9.1	9.1	9.3	8.9	8.8	9.1	9.4	9.2	9.3	9.7	9.6	9.3	9.1	9.1	8.9	8.8	9.3	9.5	9.5	9.6	9.2	9.4	8.8
洲本配水場	9.1	9.1	8.9	9.1	9.0	8.9	9.1	8.9	8.9	8.9	9.2	9.1	9.2	9.3	9.5	9.5	9.3	9.1	9.1	9.2	9.2	9.5	9.4	9.3	9.3	9.5	9.3	9.6	
播磨田水源地	16.1	16.4	16.3	16.1	16.2	16.4	16.4	16.4	16.3	16.4	16.3	16.3	16.4	16.5	16.5	16.4	16.1	16.1	16.1	16.1	16.1	16.3	16.4	16.4	16.4	16.3	16.4	16.2	16.3
立入水源地	14.8	15.3	14.7	14.7	14.9	15.1	15.0	14.9	14.5	14.6	14.8	14.8	14.8	15.1	15.1	14.4	14.2	13.8	13.7	13.9	14.3	14.3	14.4	13.9	14.0	14.1	13.7	13.9	

