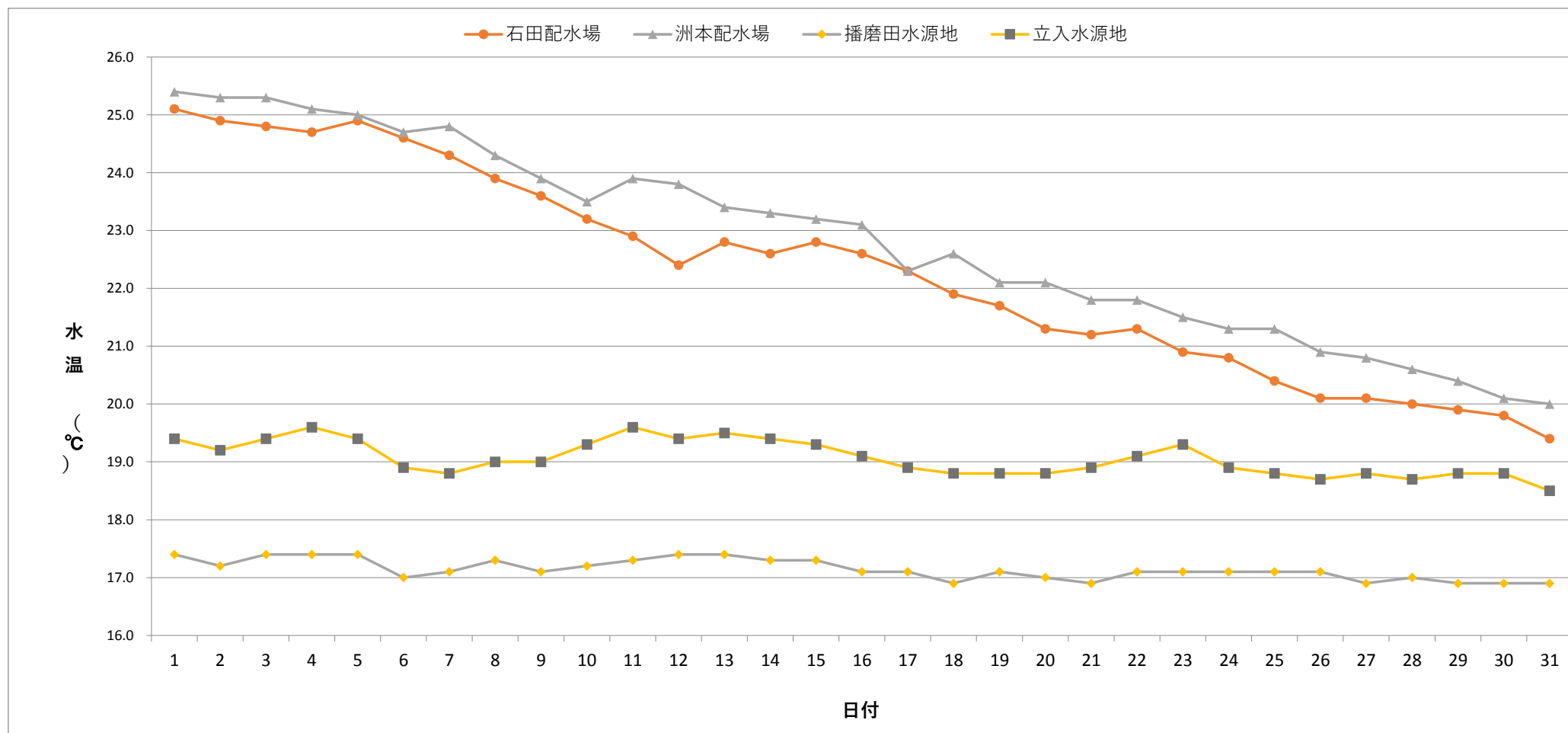


毎日水質検査報告（給水栓）
 令和2年10月 各施設 水温



	1	2	3	4	5	6	7	8	9	10	11	12	13	14	15	16	17	18	19	20	21	22	23	24	25	26	27	28	29	30	31
石田配水場	25.1	24.9	24.8	24.7	24.9	24.6	24.3	23.9	23.6	23.2	22.9	22.4	22.8	22.6	22.8	22.6	22.3	21.9	21.7	21.3	21.2	21.3	20.9	20.8	20.4	20.1	20.1	20.0	19.9	19.8	19.4
洲本配水場	25.4	25.3	25.3	25.1	25.0	24.7	24.8	24.3	23.9	23.5	23.9	23.8	23.4	23.3	23.2	23.1	22.3	22.6	22.1	22.1	21.8	21.8	21.5	21.3	21.3	20.9	20.8	20.6	20.4	20.1	20.0
播磨田水源地	17.4	17.2	17.4	17.4	17.4	17.0	17.1	17.3	17.1	17.2	17.3	17.4	17.4	17.3	17.3	17.1	17.1	16.9	17.1	17.0	16.9	17.1	17.1	17.1	17.1	17.1	16.9	17.0	16.9	16.9	16.9
立入水源地	19.4	19.2	19.4	19.6	19.4	18.9	18.8	19.0	19.0	19.3	19.6	19.4	19.5	19.4	19.3	19.1	18.9	18.8	18.8	18.8	18.9	19.1	19.3	18.9	18.8	18.7	18.8	18.7	18.8	18.8	18.5

