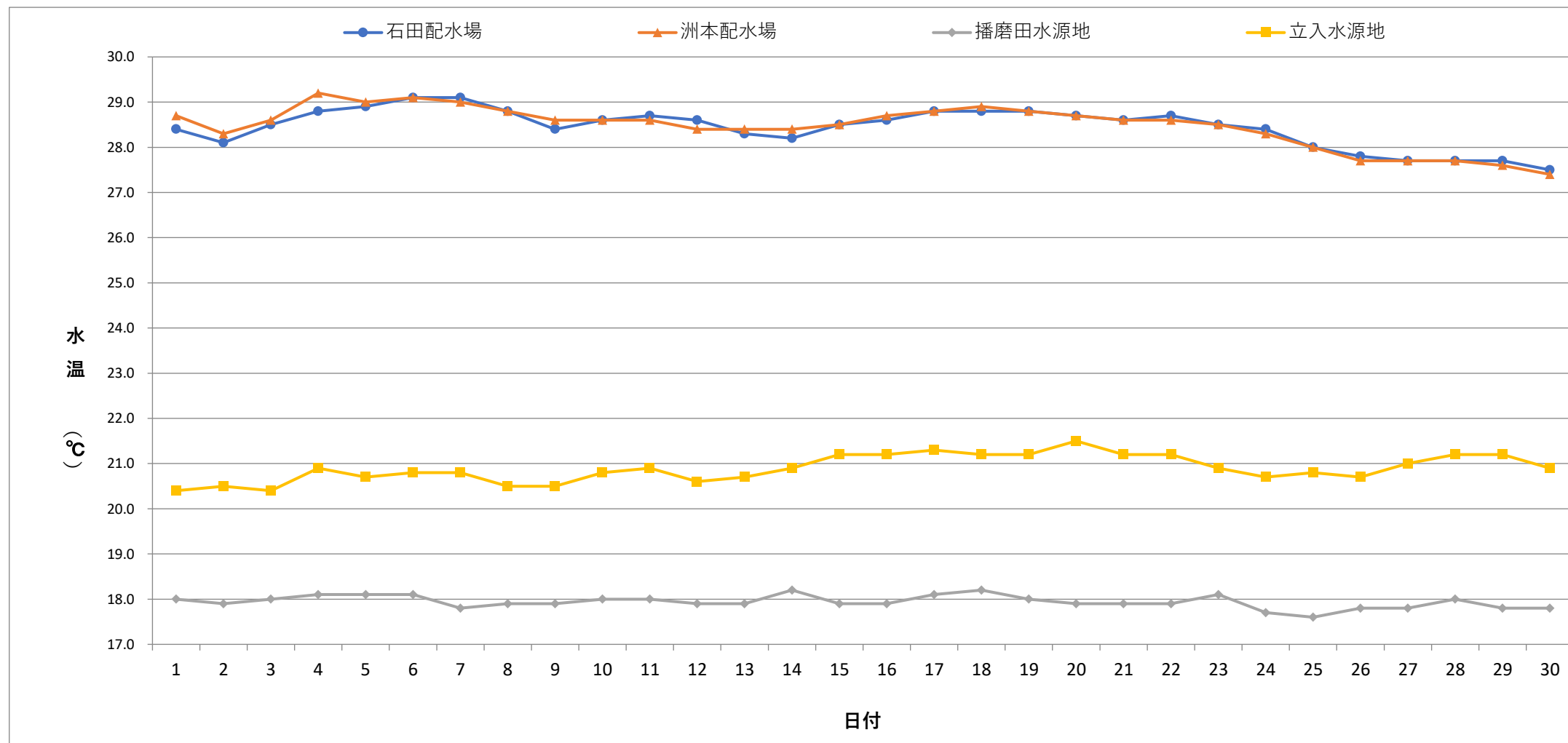


毎日水質検査報告 (給水栓)
 令和5年9月 各施設 水温



	1	2	3	4	5	6	7	8	9	10	11	12	13	14	15	16	17	18	19	20	21	22	23	24	25	26	27	28	29	30	
石田配水場	28.4	28.1	28.5	28.8	28.9	29.1	29.1	28.8	28.4	28.6	28.7	28.6	28.3	28.2	28.5	28.6	28.8	28.8	28.8	28.7	28.6	28.7	28.5	28.4	28.0	27.8	27.7	27.7	27.7	27.5	
洲本配水場	28.7	28.3	28.6	29.2	29.0	29.1	29.0	28.8	28.6	28.6	28.6	28.4	28.4	28.4	28.5	28.7	28.8	28.9	28.8	28.7	28.6	28.6	28.5	28.3	28.0	27.7	27.7	27.7	27.6	27.4	
播磨田水源地	18.0	17.9	18.0	18.1	18.1	18.1	17.8	17.9	17.9	18.0	18.0	17.9	17.9	18.2	17.9	17.9	18.1	18.2	18.0	17.9	17.9	17.9	18.1	17.7	17.6	17.8	17.8	18.0	17.8	17.8	
立入水源地	20.4	20.5	20.4	20.9	20.7	20.8	20.8	20.5	20.5	20.8	20.9	20.6	20.7	20.9	21.2	21.2	21.3	21.2	21.2	21.2	21.5	21.2	21.2	20.9	20.7	20.8	20.7	21.0	21.2	21.2	20.9

