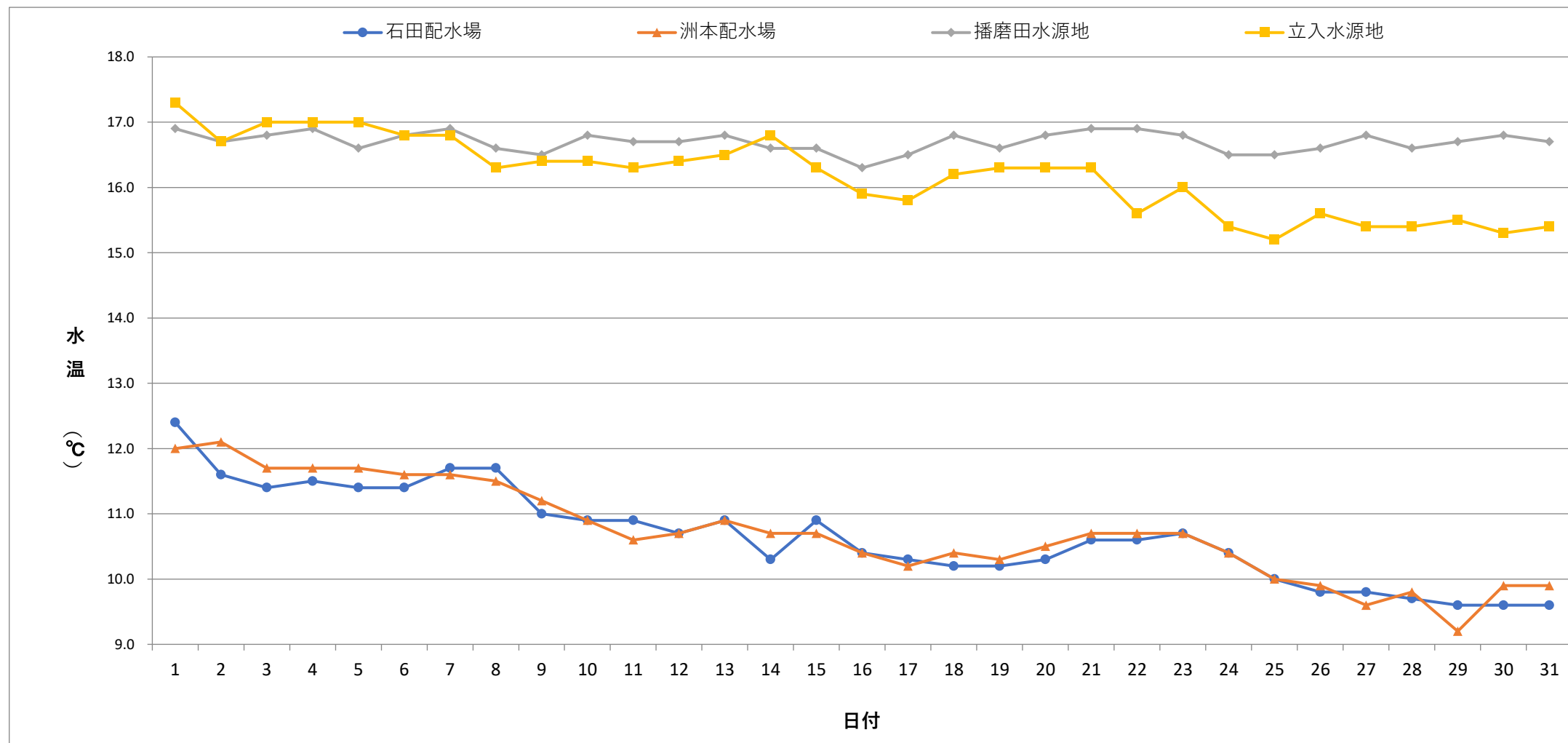


毎日水質検査報告 (給水栓)
 令和6年1月 各施設 水温



	1	2	3	4	5	6	7	8	9	10	11	12	13	14	15	16	17	18	19	20	21	22	23	24	25	26	27	28	29	30	31
石田配水場	12.4	11.6	11.4	11.5	11.4	11.4	11.7	11.7	11.0	10.9	10.9	10.7	10.9	10.3	10.9	10.4	10.3	10.2	10.2	10.3	10.6	10.6	10.7	10.4	10.0	9.8	9.8	9.7	9.6	9.6	9.6
洲本配水場	12.0	12.1	11.7	11.7	11.7	11.6	11.6	11.5	11.2	10.9	10.6	10.7	10.9	10.7	10.7	10.4	10.2	10.4	10.3	10.5	10.7	10.7	10.7	10.4	10.0	9.9	9.6	9.8	9.2	9.9	9.9
播磨田水源地	16.9	16.7	16.8	16.9	16.6	16.8	16.9	16.6	16.5	16.8	16.7	16.7	16.8	16.6	16.6	16.3	16.5	16.8	16.6	16.8	16.9	16.9	16.8	16.5	16.5	16.6	16.8	16.6	16.7	16.8	16.7
立入水源地	17.3	16.7	17.0	17.0	17.0	16.8	16.8	16.3	16.4	16.4	16.3	16.4	16.5	16.8	16.3	15.9	15.8	16.2	16.3	16.3	16.3	15.6	16.0	15.4	15.2	15.6	15.4	15.4	15.5	15.3	15.4

