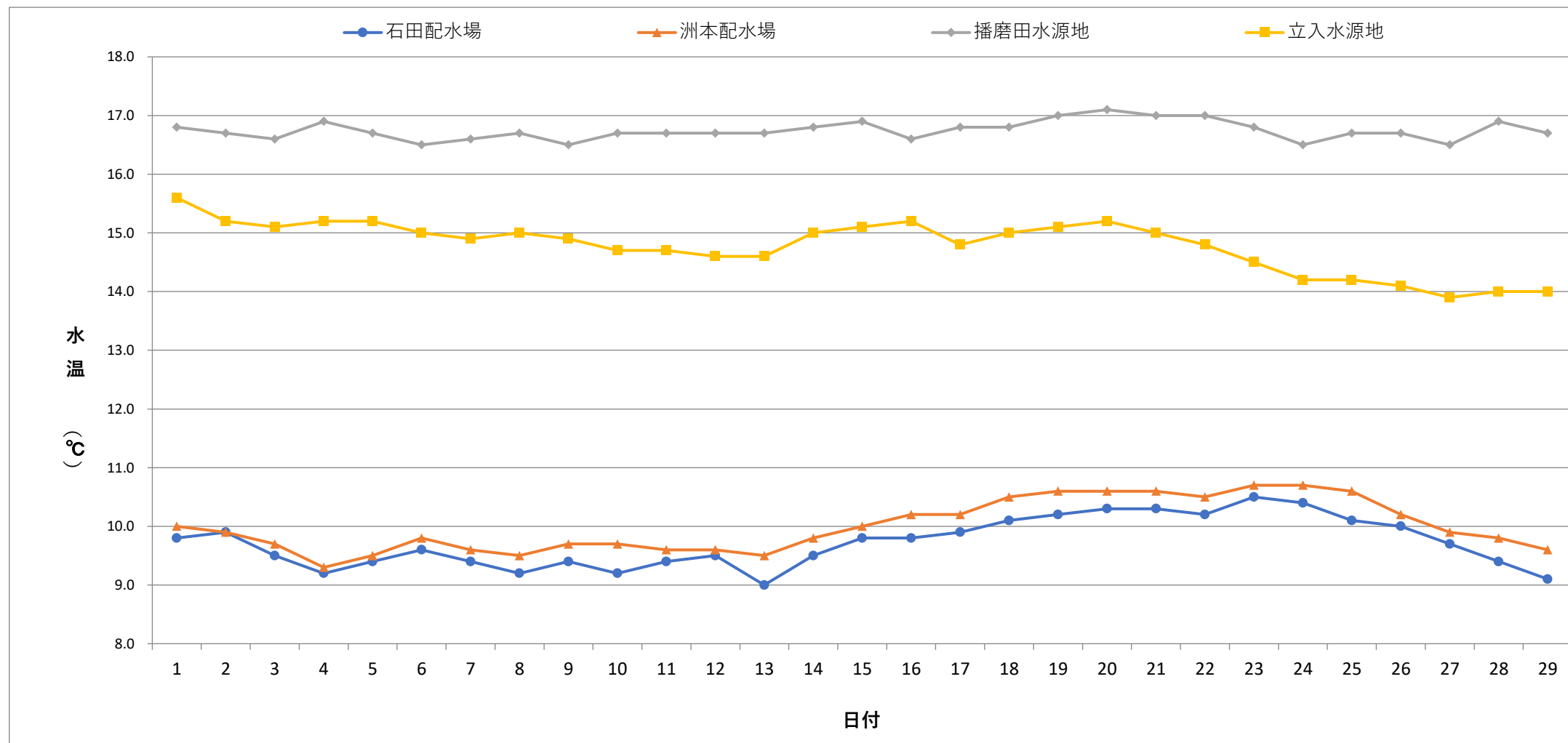


毎日水質検査報告 (給水栓)  
 令和6年2月 各施設 水温



	1	2	3	4	5	6	7	8	9	10	11	12	13	14	15	16	17	18	19	20	21	22	23	24	25	26	27	28	29
石田配水場	9.8	9.9	9.5	9.2	9.4	9.6	9.4	9.2	9.4	9.2	9.4	9.5	9.0	9.5	9.8	9.8	9.9	10.1	10.2	10.3	10.3	10.2	10.5	10.4	10.1	10.0	9.7	9.4	9.1
洲本配水場	10.0	9.9	9.7	9.3	9.5	9.8	9.6	9.5	9.7	9.7	9.6	9.6	9.5	9.8	10.0	10.2	10.2	10.5	10.6	10.6	10.6	10.5	10.7	10.7	10.6	10.2	9.9	9.8	9.6
播磨田水源地	16.8	16.7	16.6	16.9	16.7	16.5	16.6	16.7	16.5	16.7	16.7	16.7	16.7	16.8	16.9	16.6	16.8	16.8	17.0	17.1	17.0	17.0	16.8	16.5	16.7	16.7	16.5	16.9	16.7
立入水源地	15.6	15.2	15.1	15.2	15.2	15.0	14.9	15.0	14.9	14.7	14.7	14.6	14.6	15.0	15.1	15.2	14.8	15.0	15.1	15.2	15.0	14.8	14.5	14.2	14.2	14.1	13.9	14.0	14.0







