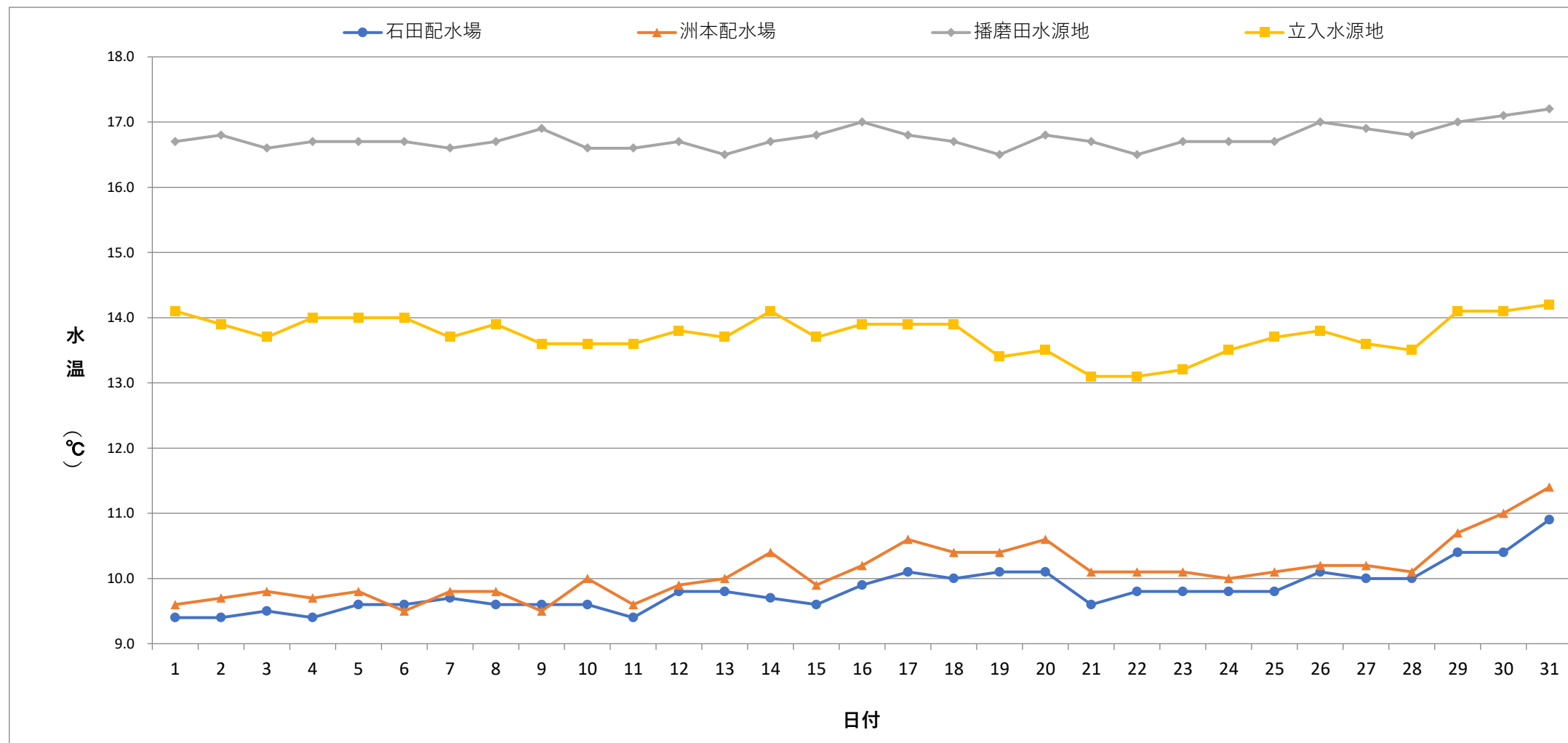


毎日水質検査報告 (給水栓)
 令和6年3月 各施設 水温



	1	2	3	4	5	6	7	8	9	10	11	12	13	14	15	16	17	18	19	20	21	22	23	24	25	26	27	28	29	30	31
石田配水場	9.4	9.4	9.5	9.4	9.6	9.6	9.7	9.6	9.6	9.6	9.4	9.8	9.8	9.7	9.6	9.9	10.1	10.0	10.1	10.1	9.6	9.8	9.8	9.8	9.8	10.1	10.0	10.0	10.4	10.4	10.9
洲本配水場	9.6	9.7	9.8	9.7	9.8	9.5	9.8	9.8	9.5	10.0	9.6	9.9	10.0	10.4	9.9	10.2	10.6	10.4	10.4	10.6	10.1	10.1	10.1	10.0	10.1	10.2	10.2	10.1	10.7	11.0	11.4
播磨田水源地	16.7	16.8	16.6	16.7	16.7	16.7	16.6	16.7	16.9	16.6	16.6	16.7	16.5	16.7	16.8	17.0	16.8	16.7	16.5	16.8	16.7	16.5	16.7	16.7	16.7	17.0	16.9	16.8	17.0	17.1	17.2
立入水源地	14.1	13.9	13.7	14.0	14.0	14.0	13.7	13.9	13.6	13.6	13.6	13.8	13.7	14.1	13.7	13.9	13.9	13.9	13.4	13.5	13.1	13.1	13.2	13.5	13.7	13.8	13.6	13.5	14.1	14.1	14.2

