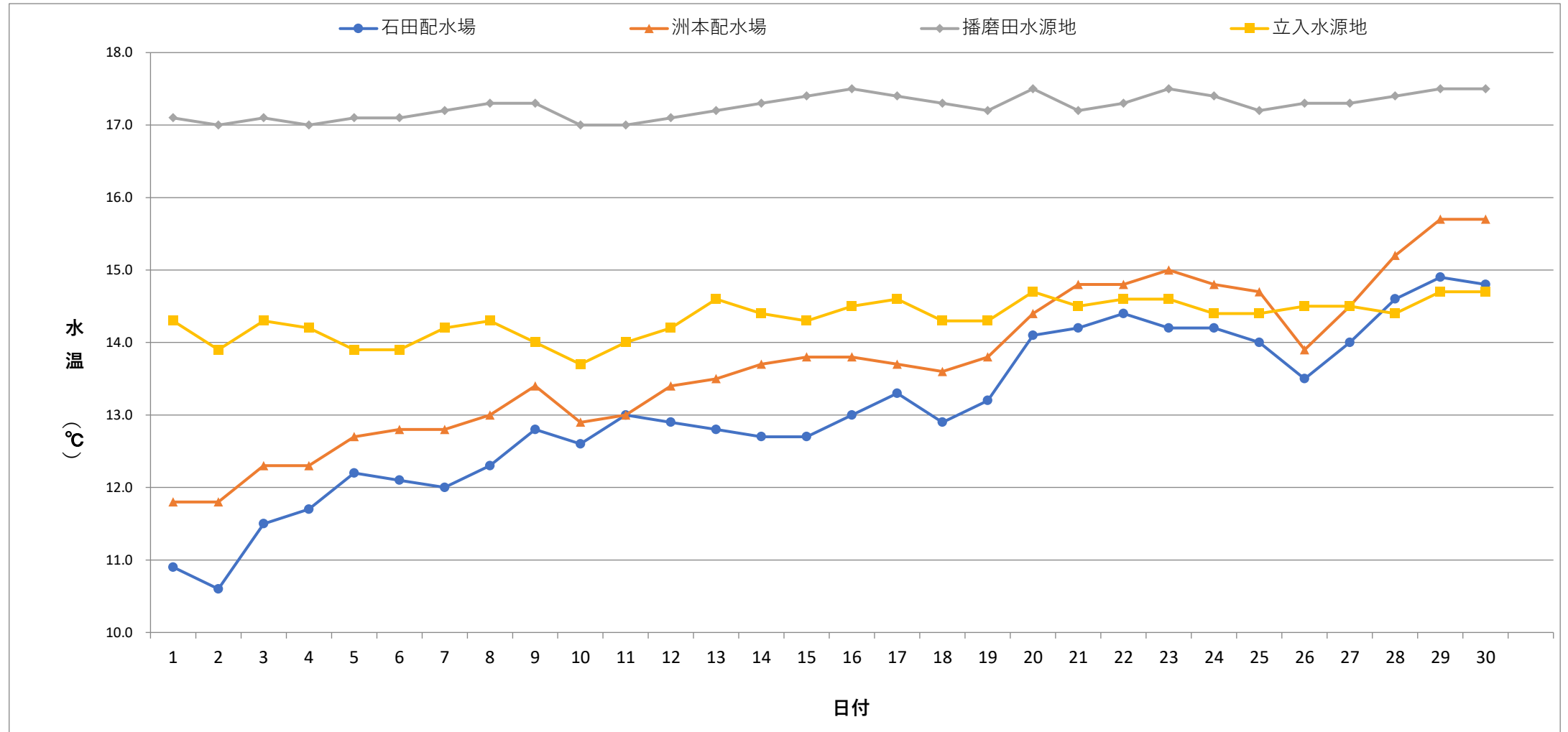


毎日水質検査報告 (給水栓)
 令和6年4月 各施設 水温



	1	2	3	4	5	6	7	8	9	10	11	12	13	14	15	16	17	18	19	20	21	22	23	24	25	26	27	28	29	30
石田配水場	10.9	10.6	11.5	11.7	12.2	12.1	12.0	12.3	12.8	12.6	13.0	12.9	12.8	12.7	12.7	13.0	13.3	12.9	13.2	14.1	14.2	14.4	14.2	14.2	14.0	13.5	14.0	14.6	14.9	14.8
洲本配水場	11.8	11.8	12.3	12.3	12.7	12.8	12.8	13.0	13.4	12.9	13.0	13.4	13.5	13.7	13.8	13.8	13.7	13.6	13.8	14.4	14.8	14.8	15.0	14.8	14.7	13.9	14.5	15.2	15.7	15.7
播磨田水源地	17.1	17.0	17.1	17.0	17.1	17.1	17.2	17.3	17.3	17.0	17.0	17.1	17.2	17.3	17.4	17.5	17.4	17.3	17.2	17.5	17.2	17.3	17.5	17.4	17.2	17.3	17.3	17.4	17.5	17.5
立入水源地	14.3	13.9	14.3	14.2	13.9	13.9	14.2	14.3	14.0	13.7	14.0	14.2	14.6	14.4	14.3	14.5	14.6	14.3	14.3	14.7	14.5	14.6	14.6	14.4	14.4	14.5	14.5	14.4	14.7	14.7

