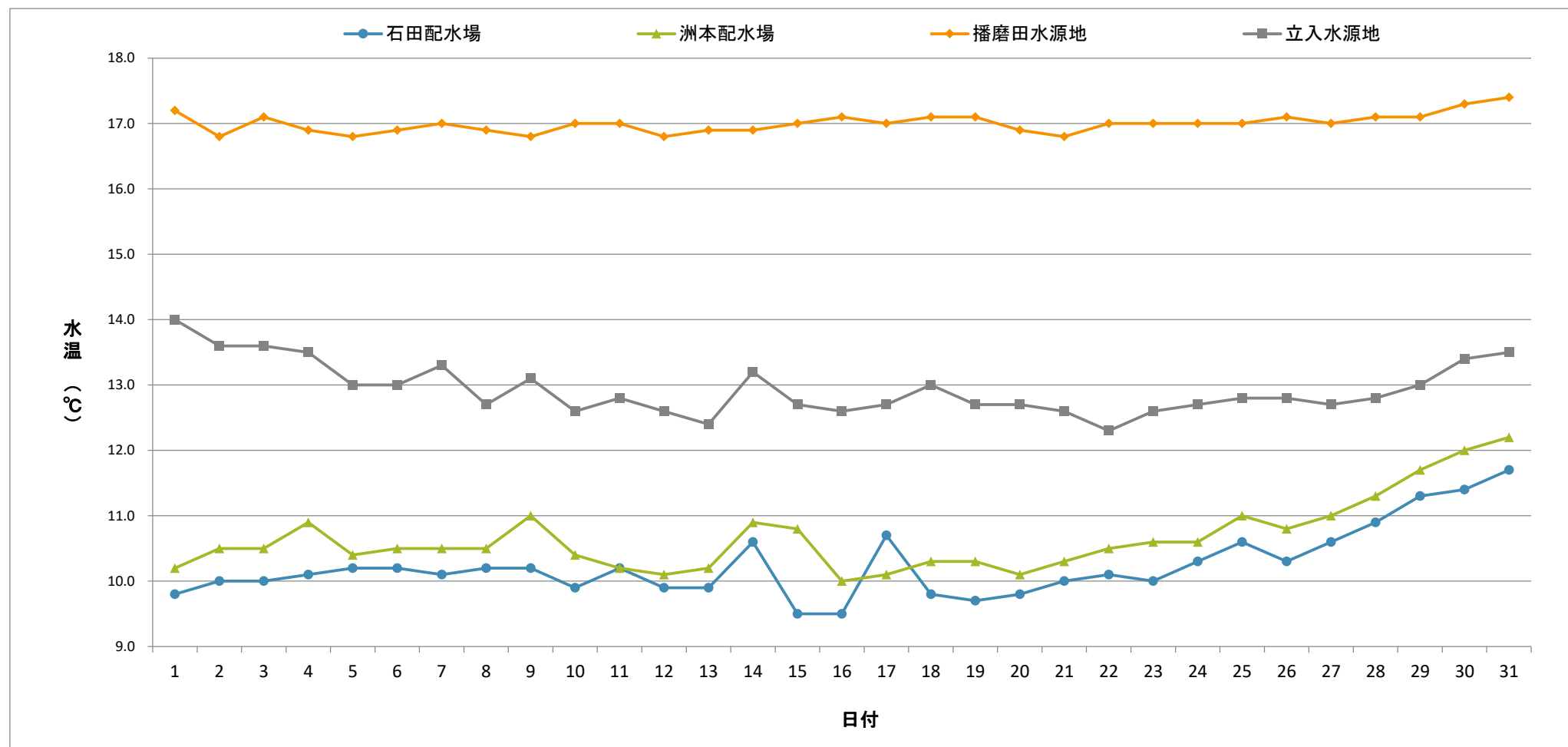


毎日水質検査報告（給水栓）
 令和8年3月 各施設 水温



	1	2	3	4	5	6	7	8	9	10	11	12	13	14	15	16	17	18	19	20	21	22	23	24	25	26	27	28	29	30	31
石田配水場	9.8	10.0	10.0	10.1	10.2	10.2	10.1	10.2	10.2	9.9	10.2	9.9	9.9	10.6	9.5	9.5	10.7	9.8	9.7	9.8	10.0	10.1	10.0	10.3	10.6	10.3	10.6	10.9	11.3	11.4	11.7
洲本配水場	10.2	10.5	10.5	10.9	10.4	10.5	10.5	10.5	11.0	10.4	10.2	10.1	10.2	10.9	10.8	10.0	10.1	10.3	10.3	10.1	10.3	10.5	10.6	10.6	11.0	10.8	11.0	11.3	11.7	12.0	12.2
播磨田水源地	17.2	16.8	17.1	16.9	16.8	16.9	17.0	16.9	16.8	17.0	17.0	16.8	16.9	16.9	17.0	17.1	17.0	17.1	17.1	16.9	16.8	17.0	17.0	17.0	17.0	17.1	17.0	17.1	17.1	17.3	17.4
立入水源地	14.0	13.6	13.6	13.5	13.0	13.0	13.3	12.7	13.1	12.6	12.8	12.6	12.4	13.2	12.7	12.6	12.7	13.0	12.7	12.7	12.6	12.3	12.6	12.7	12.8	12.8	12.7	12.8	13.0	13.4	13.5

